

**SOLID TO SUCCEED**

Green Power Pioneer Loading Great Future

# XC975-EV



Pure Electric Loader



1. Scan the QR code to follow "XCMG Loading Machinery"
2. Click the "Loader King" in the lower left corner to obtain more product details after registration

 **XCMG EARTHMOVING MACHINERY BUSINESS UNIT**

Customer service hotline (in China): **400-110-9999**

Address: No. 99, Kunpeng North Road, Xuzhou Economic Development Zone, Jiangsu Province, China  
Zip code: 221004  
Tel.: 051687938888  
Email: [sales@xcmg.com](mailto:sales@xcmg.com)  
Website: <http://www.xcmg.com>

2023-02



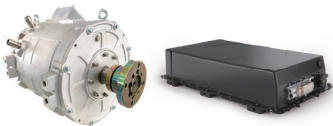
# Main Features

As a representative model of XCMG's third-generation pure electric wheel loader, XC975-EV takes the lead in adopting the innovative "Tri-motor" technical solution in the industry, that is, the machine is designed without a transmission. It is not only incorporated with XCMG's core independent power intelligent matching optimization technology to realize integrated intelligent control of the motor power, speed, torque and other parameters, but also designed with intelligent thermal management system, energy recovery, and three-level error protection in order to ensure intelligent, efficient and safe operation of the machine. It is suitable for operation at an ambient temperature from -40°C to 50°C, and can be widely used in steel mills, power plants, coking plants, coalchemical facilities, coal yards, sand and gravel quarries, tunnels and other fields.



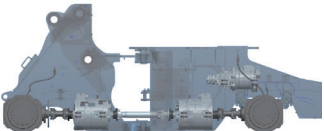
## Green power based on pure electric drive, achieving environmental friendliness and emission reduction

- 1 By replacing "fuel" with "electricity", the traveling system and hydraulic system of the vehicle are respectively driven by independent motors, not only achieving pure electric power with zero emissions and no pollution, but also saving maintenance costs for air, oil and fuel filters indispensable for a diesel engine.
- 2 The average energy consumption is approximately 1/3 of that of a diesel engine, which greatly reduces the energy cost.



## Intelligence and robust power, ensuring efficient and energy-saving operation

- 1 Thanks to the industry-leading drive technology based on dual motors in series, the traveling system supports intelligent coupling and driving functions with smarter and stronger power performance.
- 2 The first non-transmission solution in this field is able to not only reduce the failure feedback rate, but also eliminate the cost for maintenance and use of transmission, providing a worry-free and cost-effective option to customer.
- 3 The machine is equipped with FNR joystick as standard, which can be used to adjust the motor speed in real time according to the throttle opening, realizing stepless gear shifting and higher work efficiency.
- 4 The motor controller is able to control the motor by detecting brake or accelerator signals, etc., so that the motor can reversely charge the battery during operation to improve the energy efficiency of the machine.



## High-end platform specially developed for European and American markets, creating comfortable, quiet and easy driving experience

- 1 The innovative XC9 series products are built on high-end platforms with a brand-new industrial appearance which are specially designed for European and American markets according to CE and North American standards.
- 2 The vehicle is configured with a super-curved panoramic cab as standard, which features modern interior style, ergonomic arrangement and streamlined shape, creating an open, bright, quiet and comfortable space for the driver.
- 3 The mine-level frame structure with large articulation length and angle is designed and manufactured by using intelligent technologies such as CAE simulation analysis and robot welding, and suitable for various super-heavy-duty operating conditions.
- 4 The machine is configured with an electronically-controlled flip-back hood as standard, featuring a large opening angle to ensure easier maintenance.



## Prolonged warranty period, ensuring reliable, safe and worry-free service

- 1 All key electrical components, including the "three-electric system" are integrated with standardized and modular design and selected from world-leading brands, meeting the ingress protection rating of IP67 for commercial vehicles for civil purposes. The battery and motor are provided with a longer warranty period of five years or 10,000 hours (whichever comes first) to ensure safe and reliable operation.
- 2 The key component systems are incorporated with intelligent thermal management systems such as electronic fan, which can meet various operating requirements and ensure smarter and more efficient operation.
- 3 The vehicle is designed with three-level error protection, allowing custom setting of low-battery charging reminder, operating status information, error information to be displayed on the screen according to users' requirements, and enabling on-line remote error diagnosis to provide intelligent and worry-free support.

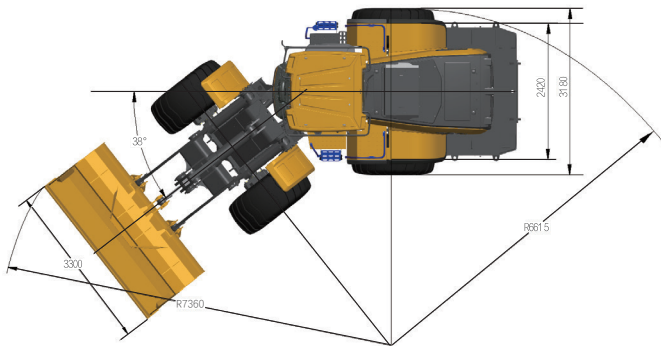
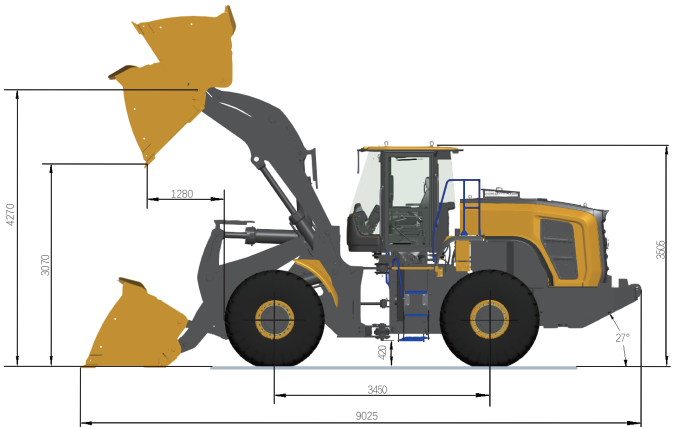


## Dual-gun DC fast charging and longer durability

- 1 Two charging ports are provided on the left side of the vehicle's counterweight according to international standards, which not only support dual-gun DC fast charging, but also can be selected individually for single-gun charging.
- 2 It is recommended to choose a charging pile with a specification of 240kW-360kW, and the vehicle must be charged in strict accordance with relevant instructions.
- 3 The battery durability varies from operating conditions. Generally, the machine can be operated continuously for 6-10 h.



# Main Parameters



Parameter	Unit	XC975-EV
Rated load	kg	7000
Rated bucket capacity	m³	4.0-6.5
Working mass	kg	23100
Motor rated total power	kW	270
Dumping height	mm	3070
Dumping range	mm	1280
Wheel base	mm	3450
Wheel track	mm	2420
Max breakout force	kN	195
Total cycle time	s	10
Max gradeability	°	27
Steering angle	°	38
Forward Gear I/II	km/h	18/34.5
Reverse Gear I/II	km/h	18/34.5
Overall dimensions (L × W × H)	mm	9025x3300x3505

Main Specifications	Specification	XC975-EV
Drive axle	Brand & type	XCMG dry-type axle
Working hydraulic system	Type	Dual-pump convergence
	Operation mode	Pilot control
Steering hydraulic system	Type	Flow amplification
Brake system	Service brake	Fully-hydraulic caliper-disc type
	Parking brake	Hydraulic caliper-disc type
Air conditioning system	Type	Electric, heating and cooling
Control system	System voltage	DC 24V
Tire	Specification	750/65R25
Durability	General condition	6-8h
	Heavy-duty condition	5-6
Charging time	300kW charging pile	80min
Charging pile specification	Optional specification	240~360kW
Fluid/oil filling quantity	Antifreeze	45L
	Drive axle oil	40L (front axle), 36.5L (rear axle)
	Hydraulic oil	145L

Battery motor	Item	Unit	XC975-EV
Powertrain battery	Specification & type	/	Lithium iron phosphate
	Rated capacity	Ah	684
	Stored energy	kWh	423
	Rated voltage	V	618
	Protection rating	/	IP67
	Cooling method	/	Water cooling with intelligent temperature control
Drive motor	Rated power	kW	2x100
	Protection rating	/	IP67
	Cooling method	/	Forced water cooling
	Ambient temperature	°C	-40-55
Hydraulic motor	Altitude	m	4500
	Rated power	kW	70
	Protection rating	/	IP67
	Cooling method	/	Forced water cooling
	Ambient temperature	°C	-40-55
	Altitude	m	4500

- The technology of XCMG wheel loaders is subject to constant improvement and upgrading. In case the specifications or detailed appearance contained in this brochure differ from actual products, the latter shall prevail.
- XCMG reserves the right of final interpretation for the above. Our products may be modified without prior notice to users.